

Lighthouse EIP Management Solution



LIGHTHOUSE
Environmental Infection
Prevention®



Environmental Services has been faced with many recent challenges due to the pandemic and staffing shortages. You are responsible for a department that is required to do the same work (or more), in less time, with fewer people. The Lighthouse Programs are designed to provide help where you need it most. Depending on your needs, our team can provide the following services:

Comprehensive Facility Assessment & Detailed Report 3

Education & Certification..... 4

3rd PARTY Quality Assurance/Validation Services 5

RFP Management..... 6

HCAHPS & Patient Satisfaction..... 6

Staffing Assessment & Allocation Recommendations..... 6

Program Implementation Support 7

Comprehensive Advisory And Ongoing Quality Assurance Support 7



Comprehensive Facility Assessment & Detailed Report

The Comprehensive Facility Assessment is an **audit of your entire operation**. Based on your specific needs, audits can be completed for Environmental Services, Food and Nutrition Services, Patient Transport, Facilities Management, Laundry & Linen and Waste Management. Following the assessment, you will be provided with a detailed report containing data on all key assessment findings, suggestions and recommendations, and an action plan.

Options for the audits include the following areas:



Our assessment and report are designed to be a tool to help you best utilize your limited resources. Included in the report:

- Comprehensive Plan Outline
- Immediate action items
- 12 - month plan

1. Environmental Infection Prevention & Safety

- Cleaning & Disinfection
- Enhanced Disinfection
- Specialty Area

2. Product & equipment review

3. Operations:

- Program standards
- Quality Assurance
- Pattern of Management
- Technology & Software review

4. Staffing & Productivity

5. Regulatory Compliance

6. Training & Development

7. Biological & Air Testing (all data is confidential)

- Aerobic Colony Forming Units (CFU's)
- Fungal CFU's
- MRSA CFU's
- Other pathogens upon request



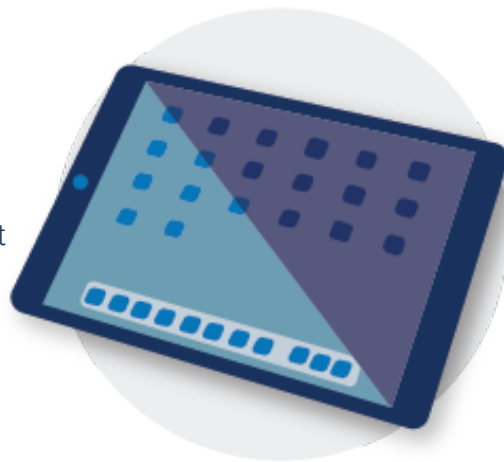
Education & Certification

Lighthouse offers **competency-based training & certification** programs for your leadership and hourly staff, including an option for specialty area focus.

Management and/or Hourly Staff Infection Prevention Development Certification Program

Training Components:

- On-boarding, orientation to healthcare infection prevention
- Basic skills training
- Technical skills training
- Infection Prevention
- Regulatory
- Training & Development
- Manager Basics
- Floor care basics
- Staffing & Productivity
- Annual certification



Sustained Quality Assurance Training for Management:

- Quarterly mentoring rounds w/ management staff
- Customer interviews
- Performance monitoring
 - Black-light
 - Biological and air testing (optional)

Specialty Areas

Specialty areas require very specific processes for cleaning and disinfection. Staffing levels and high-volume turnover in these areas often challenge the processes and procedures in place. It is essential that your teams are armed with the most up to date training, and that regulatory guidelines are being met to reduce the risk of HAI's.

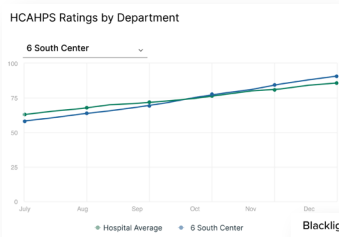
Program components:

- Assess current practices and tools
- Regulatory compliance
- Classroom and hands-on training for management and staff
- Quality assurance programming

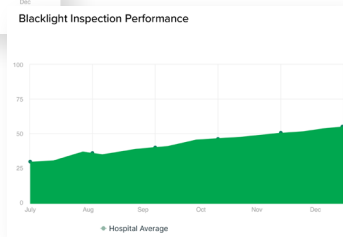


3rd PARTY Quality Assurance/Validation Services

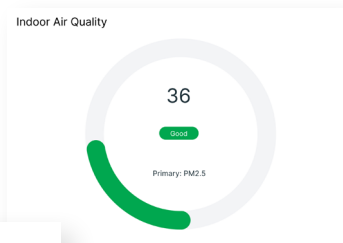
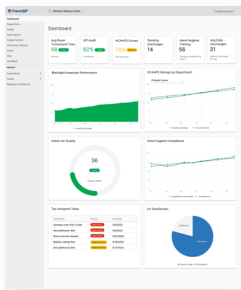
The Lighthouse Quality Assurance / Validation Services will provide you with **third party expert analysis** and support of your overall environmental services operations. We can customize frequency based on your needs.



- HCAHPS & Patient Satisfaction
- Validate Cleaning Effectiveness
- Biological Testing of Critical Surfaces



- Staffing & Productivity Assessment
- Environmental Services Operating Practices
- Leadership & Staff Development



- Environmental Infection Prevention & Safety
- Regulatory Compliance
- Enhanced Cleaning Practices

Top Assigned Tasks

Task Name	Priority	Due Date
Sanitize room 43A, 5 East	High Priority	5/5/2022
Dirty Bathroom Sink	High Priority	5/8/2022
Room must be cleaned	High Priority	5/22/2022
Replace ceiling tiles	Medium Priority	5/18/2022
Dirty Bathroom Sink	Medium Priority	5/17/2022

- Customer Surveying
- Tracking of Key Metrics & Performance Indicators



RFP Management

A New Way to Manage RFP's

Variations in labor needs and products can significantly impact submissions and bring in varied results. How do you compare bids when the content is so different? What is driving the differences in cost? The Lighthouse RFP program **eliminates variation** in the key response areas.

Program Components:

- Comprehensive labor assessment
- Environmental services needs assessment
- Determination of bid specifications
- Standardization of bid parameters

Additional RFP Services:

- Bid review and recommendations
- Facilitation of start-up and program oversight



HCAHPS & Patient Satisfaction

Lighthouse will complete a comprehensive assessment of your HCAHPS scores.

- **Review** methods used to assess performance and delivery of services
- **Analyze** scores
- **Assess** service delivery model and patient engagement

Staffing Assessment & Allocation Recommendations

The staffing and productivity audit will provide a **zero based assessment** of all hourly and management needs. We will utilize industry standards, best practices and your specific volumes and frequencies required to deliver positive outcomes. This will provide the data necessary to develop an effective plan for your department.

Options:

- Unitization
- Working schedules
- Daily assignment schedules
- Position schedules
- Staff plan
- On/Off schedules
- Productive versus non-productive

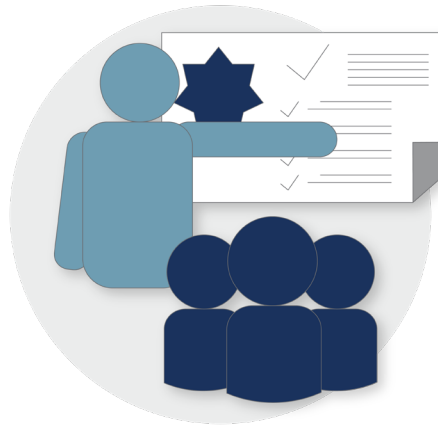


Program Implementation Support

Following your comprehensive facility assessment, the Lighthouse Implementation Team can **create and execute a custom training** plan to meet your specific needs.

Components:

- End-user classroom training
- SuperUser (Management) training
- In-use observation and training
- Detailed training report



Comprehensive Advisory And Ongoing Quality Assurance Support

Training and support do not end after implementation. Our team of **experts** will work with every level of your organization to ensure **successful outcomes** and continuous improvement.

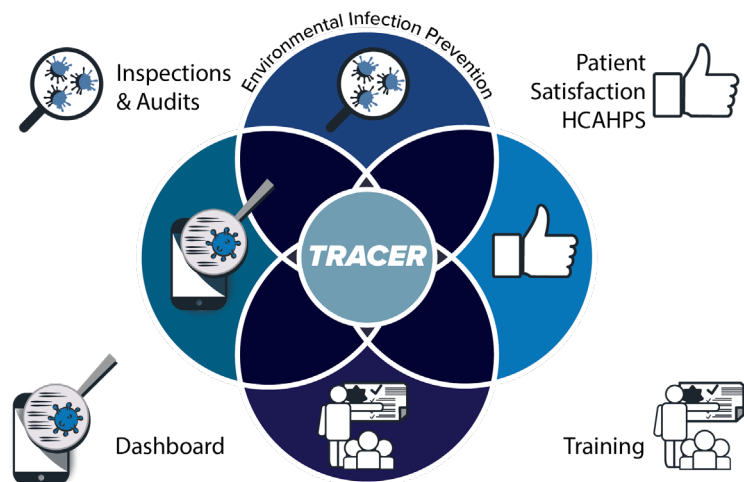
Support Components:

- Monthly quarterly rounding, quality monitoring
- QA reporting
- Monthly Program audits
- Labor management review
- Operations support
- Education & training
- Quarterly biological testing & report (optional)
- Regulatory Assessment and Ongoing Support

TracerEIP/IP Software Option

Benefits:

- Predict infections before they occur
- Improved departmental efficiency
- Employee recognition
- Improved patient satisfaction
- Reduced HAI's
- Increased patient throughput via reduced length of stay & readmissions
- Regulatory Assessment and Ongoing Support



Illuminating The Path to a Safer Future

The path to a healthier, safer future begins with world-class partners, technologies and practices. Lighthouse Environmental Infection Prevention is a group of end-to-end infection prevention companies and partners that service a variety of industries across North America.



LIGHTHOUSE
Environmental Infection
Prevention®

